

# Managing Stereotypes in the Face of Evolving Reality

Sara Jo Nixon, PhD  
Distinguished Professor  
Dept. Psychiatry, Psychology, & Neuroscience  
University of Florida

ASAM Annual Conference, April 27, 2025



# Disclosure Information

## Managing Stereotypes in the Face of Evolving Reality

April 27, 2025 8:30-9:45 AM MST

Sara Jo Nixon, PhD

- ☀ No Disclosures
- ☀ Acknowledgements
  - ☀ The National Institute on Alcohol Abuse & Alcoholism



# Learning Objectives

- ☀ Compare and contrast conventional and current perceptions of alcohol use in older adults
- ☀ Interrogate associations between psychosocial stressors, alcohol use and cognition in healthy older women
- ☀ Describe age-sensitive screening instruments and steps in defining treatment goals

# Older Women Who Drink “Too Much” Are

Lonely

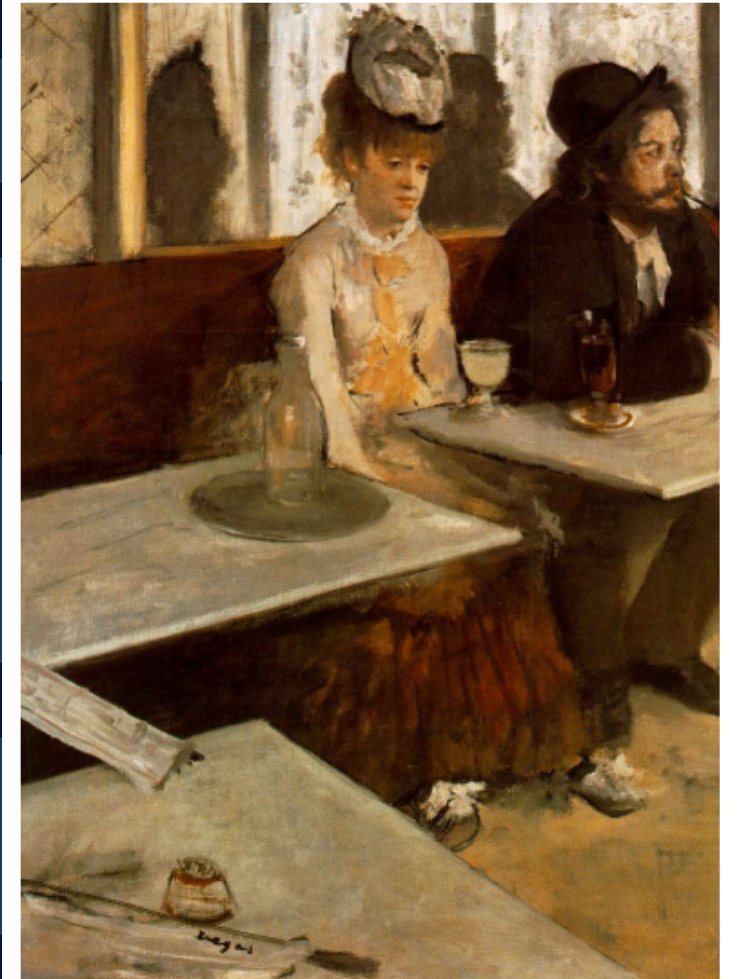
Isolated

In Miserable  
Relationships

In *Really* Miserable  
Relationships



Pablo Picasso. *The Absinthe Drinker*. 1901.



Edgar Degas. *L'absinthe*. 1876.



# Older Women Who Drink “Too Much”

Experienced  
Personal/Familial/Cultural Trauma

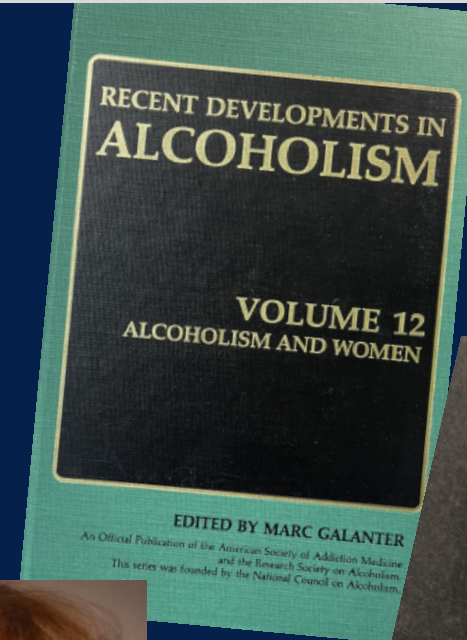
Failed in Societal-Defined Roles

Are characterized by controlling  
interpersonal styles



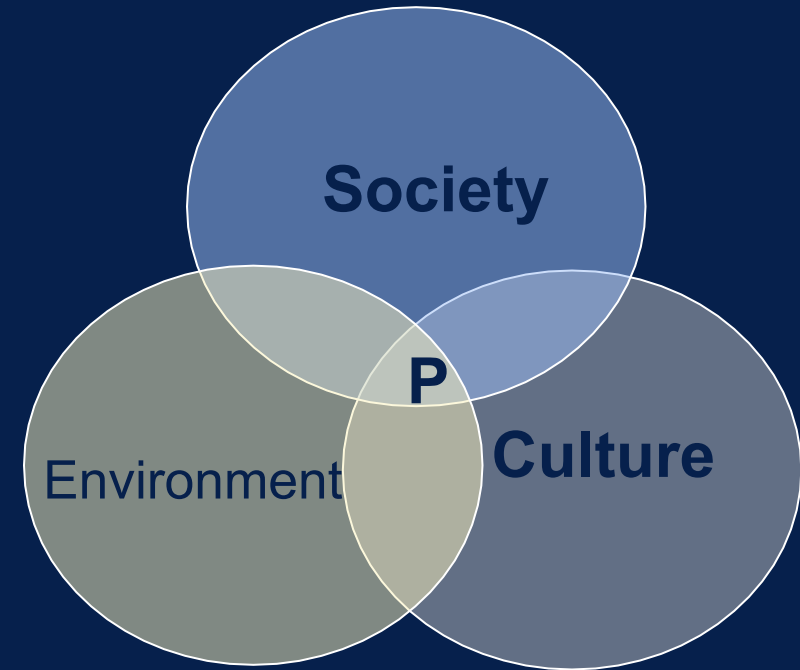
Stock Photo: Elizabeth Taylor “Who’s Afraid of Virginia Wolf”

# Why are we still asking- Does One-Size Fit ALL?



# Older Women Drink “Be~~X~~se”

- ☀ Stereotypes hold some “truth”
- ☀ Stereotypes are inadequate
- ☀ Individual Factors
- ☀ Societal Factors
- ☀ Cultural Factors

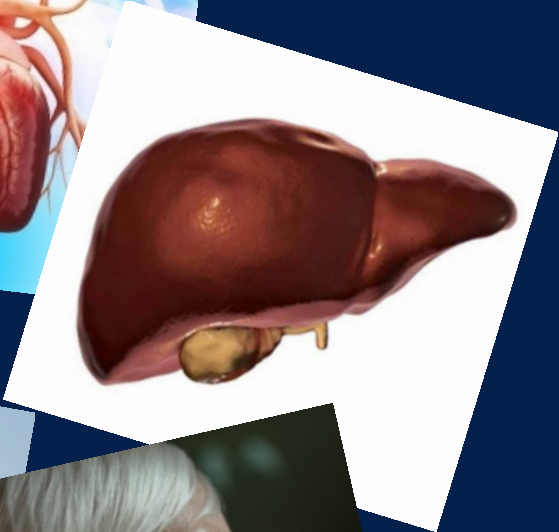


IN THE “CONTEXT” OF

# Why Focus on Older Women

Alcohol-  
Exacerbated  
Aging  
Outcomes

Age-  
Exacerbated  
Alcohol  
Outcomes





# Screening: Who Gets It/ What Works

Among adults  $\geq 65$  who drank alcohol and saw health care provider in prior year

Women 18% less likely than men to have “the talk” following endorsing use (either on intake form or in person).

van Gils et al (2021)

Defining hazardous use>10 drinks /week

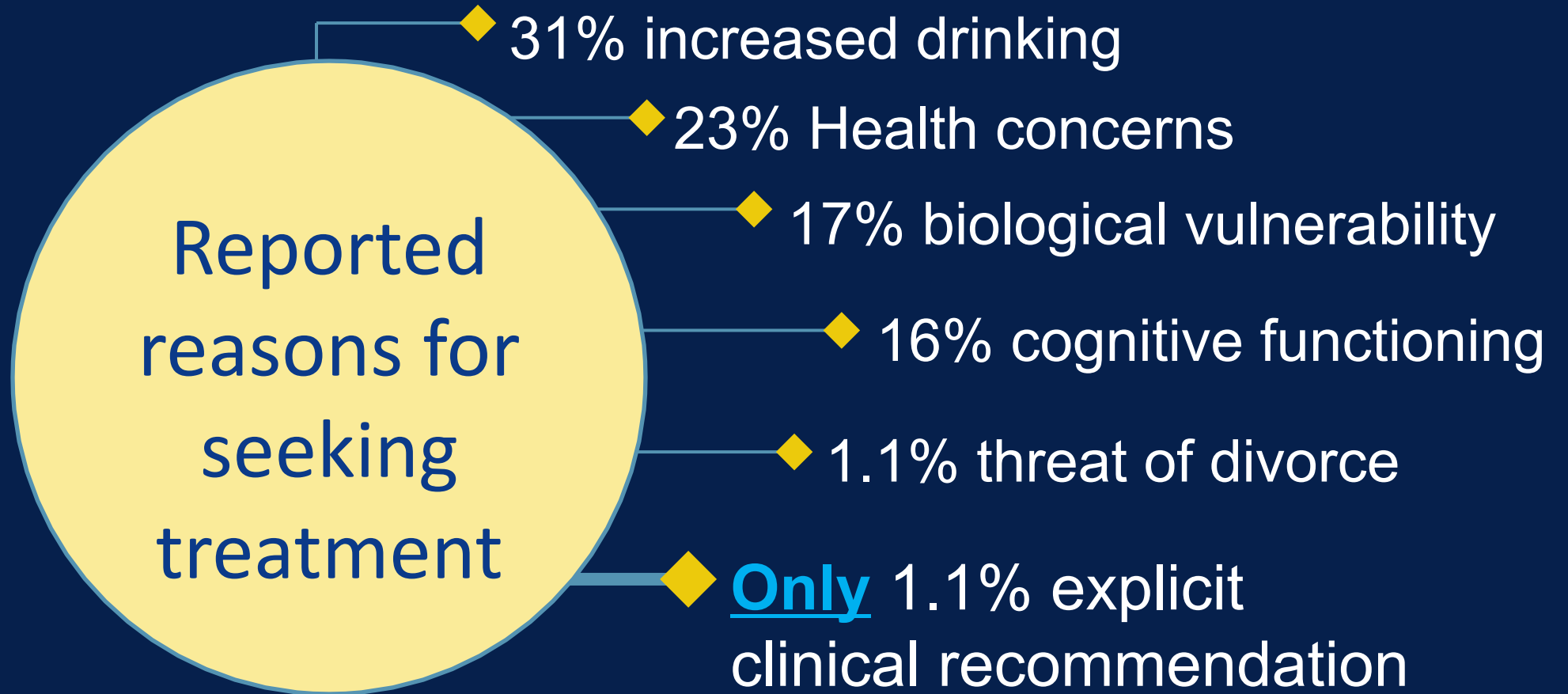
Score > 4 Provided 100% Sensitivity & 74.1% Specificity

Women Over 60

## AUDIT-C

Question	Answer	Score
1. How often did you have a drink containing alcohol in the past year?	Never	0 point
	Monthly or less	1 point
	2 to 4 times per month	2 points
	2 to 3 times per week	3 points
	4 or more times per week	4 points
2. On days in the past year when you drank alcohol how many drinks did you typically drink?	0, 1, or 2	0 point
	3 or 4	1 point
	5 or 6	2 points
	7 - 9	3 points
	10 or more	4 points
3. How often did you have 6 or more (for men) or 4 or more (for women and everyone 65 and older) drinks on an occasion in the past year?	Never	0 point
	Less than monthly	1 point
	Monthly	2 points
	Weekly	3 points
	Daily or almost daily	4 points

# Is it enough?



# Population Trends: NESARC

## 12-Month Use

	2001/2	2012/13	% Change
Overall	65.4 %	72.7 %	11.2 %
45-64	64.3 %	71.9 %	11.8 %
≥ 65	45.1 %	55.2%	22.4 %

## 12-Month High Risk

	2001/2	2012/13	% Change
Overall	9.7 %	12.6 %	29.9 %
45-64	7.5 %	11.2 %	49.3 %
≥ 65	2.3 %	3.8 %	65.2 %



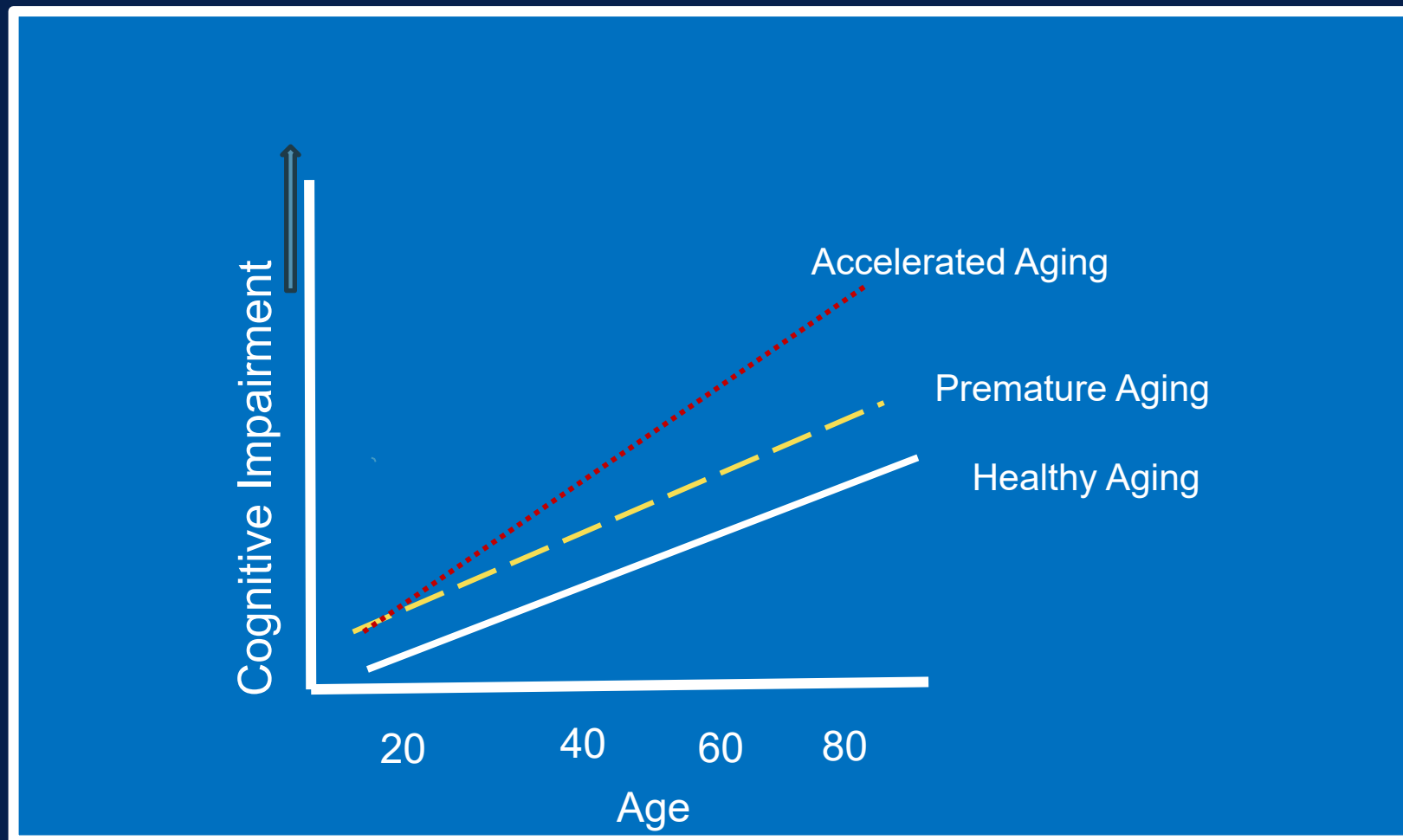
Alcohol-  
Exacerbated  
Aging  
Outcomes



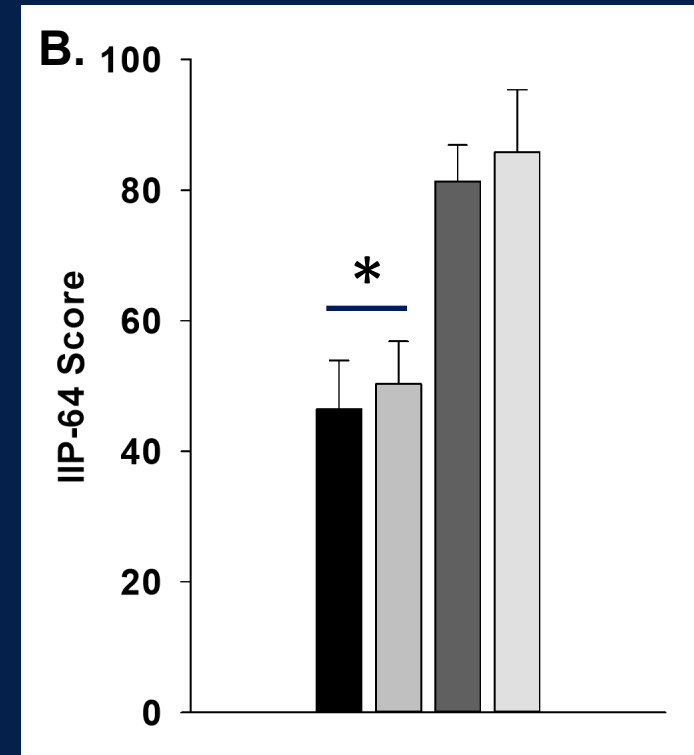
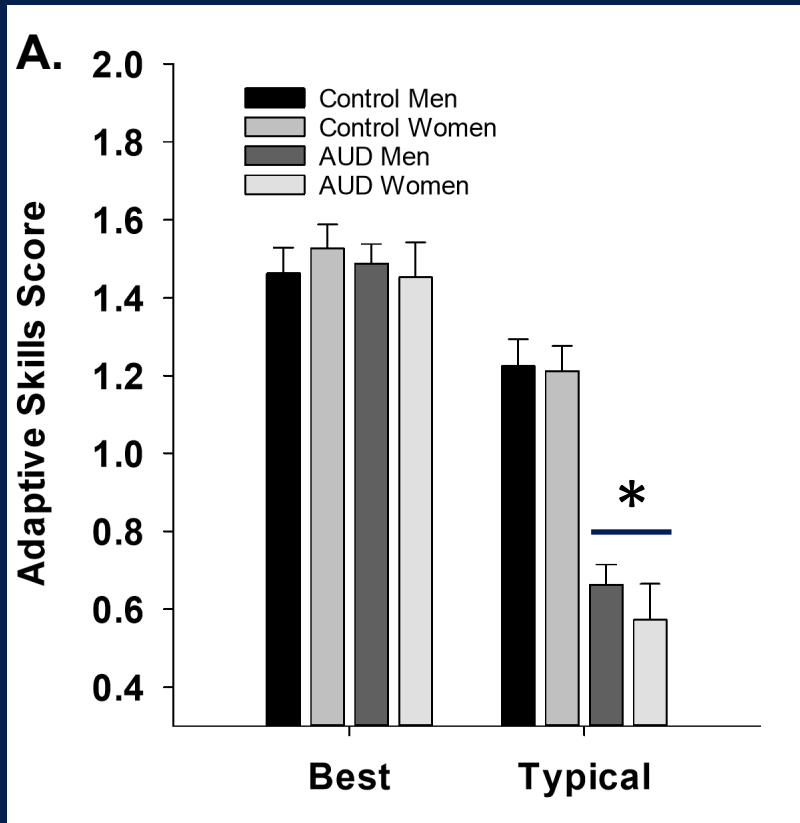
Age-  
Exacerbated  
Alcohol  
Outcomes

Heterogeneity is the Hallmark

# Hypothetical Trajectories: Age-Related Vulnerability



# ASB and IIP-64 Scores by Group and Sex



# Clarifying Next Steps

DEFINING *WITH* NOT DEFINING FOR

Harm reduction

Abstinence

Motivational  
Interviewing

Social Network

Treatment  
Alternatives

Resources

Lived  
Experience

s

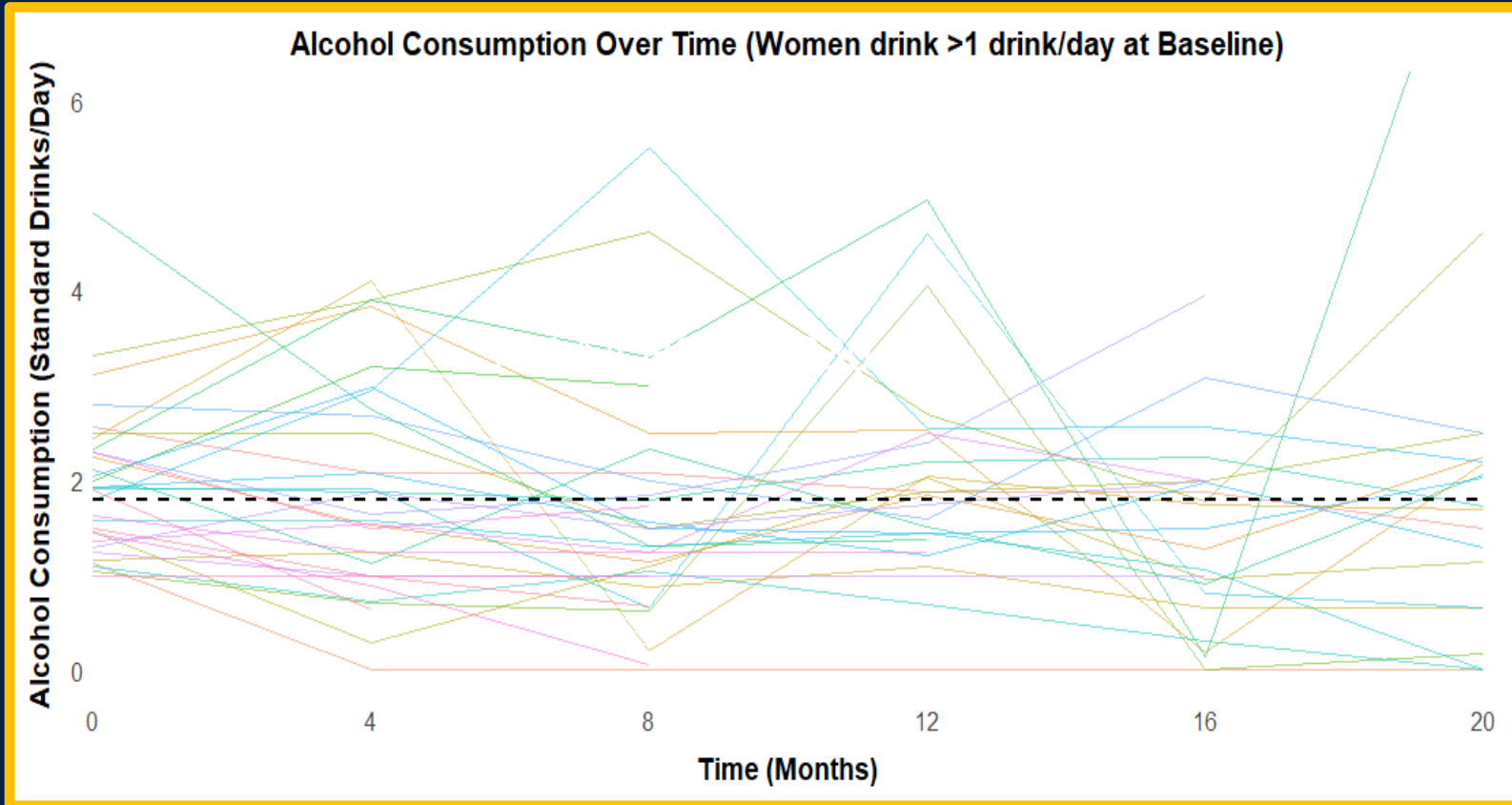


# One MORE Consideration

- ☀ DYNAMIC nature of drinking behaviors

- ☀ Importance of regular assessment of drinking

- ☀ Relevance of person-centered interview



Nixon, Lewis et al (In prep) : From NIAAA R01AA030188

# Acknowledgements



## Support for these projects

- NIAAA R01 AA02245
- NIAAA R03 AA025430
- NIAAA R01 AA030188

## Past:

Jeff Boissoneault, PhD  
Rebecca Gilbertson, PhD  
Christian Garcia, PhD  
Lauren Hoffman, PhD  
Oscar Parsons, PhD  
Robert Prather, BA  
Rick Tivis, MPH

## Current:

Ben Lewis, PhD  
Andrew Moore, BS  
Isabella Ocasio, BS  
Haley Pegram, MS  
Meagan Sullivan, MPH  
Samuel Torres, BS

# References

1. Grant, B. F., Chou, S. P., Saha, T. D., Pickering, R. P., Kerridge, B. T., Ruan, W. J., Huang, B., Jung, J., Zhang, H., Fan, A., & Hasin, D. S. (2017). Prevalence of 12-Month Alcohol Use, High-Risk Drinking, and DSM-IV Alcohol Use Disorder in the United States, 2001-2002 to 2012-2013: Results From the National Epidemiologic Survey on Alcohol and Related Conditions. *JAMA psychiatry*, 74(9), 911–923. <https://doi.org/10.1001/jamapsychiatry.2017.2161>
2. Grosso, J. A., Epstein, E. E., McCrady, B. S., Gaba, A., Cook, S., Backer-Fulghum, L. M., & Graff, F. S. (2013). Women's motivators for seeking treatment for alcohol use disorders. *Addictive Behaviors*, 38, 2236-2245. doi:10.1016/j.abbeh.2013.02.004
3. Lewis, B., Price, J.L., Garcia, C.C., Nixon, S.J. (2019). Emotional face processing among treatment-seeking individuals with alcohol use disorders: investigating sex differences and relationships with interpersonal functioning. *Alcohol & Alcoholism* 54(4), 361-369. PMCID: PMC6671392
4. Mauro, P. M., Askari, M. S., & Han, B. H. (2021, September). Gender differences in any alcohol screening and discussions with providers among older adults in the United States, 2015-2019. *Alcohol, Clinical and Experimental Research*, 45(9), 1812-1820. doi:10.1111/acer.14668
5. van Gils, Y., Franck, E., Dierckx, E., van Alphen, S. P., Saunders, J. B., & Dom, G. (2021). Validation of the AUDIT and AUDIT-C for Hazardous Drinking in Community-Dwelling Older Adults. (P. B. Tchounwou, Ed.) *International Journal of Environmental Research and Public Health*, 18(9266). doi:doi.org/10.3390/ijerph18179266